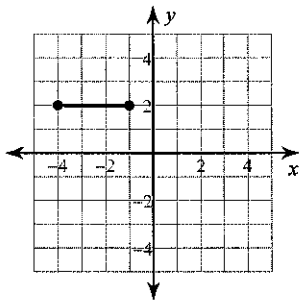


## Coordinate Distance Homework

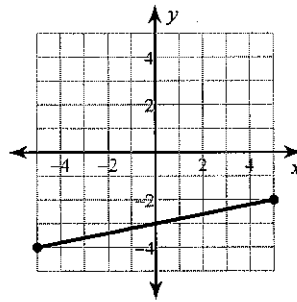
Date \_\_\_\_\_

**Find the distance between each pair of points.**

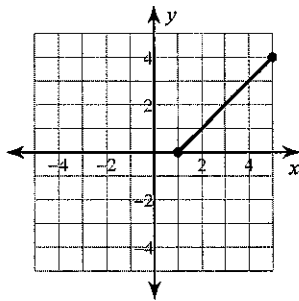
1)



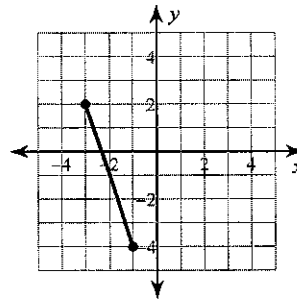
2)



3)



4)

5)  $(8, -8)$ ,  $(-4, -8)$ 6)  $(0, 3)$ ,  $(-2, -1)$ **Write the slope-intercept form of the equation of the line described.**7) through:  $(-4, 1)$ , perp. to  $y = 2x + 4$